



Certificate of Analysis

CANNABUSINESS LABORATORIES, LLC

Customer:

Great Lakes Hemp, Inc
W330 Litle Prairie Rd.
Palmyra, WI 53156
USDA_55_0067

Sample ID **260209023**

Order Number **CB260209004**

Sample Name **Hemp Breeze 1oz 1000mg**

External Sample ID

Received Date **2/9/2026**

Collection Date

COA Released **2/18/2026**

Comments

Batch Number **192506ALGLHJB-002HB**

Product Type **Topical**

Sample Type **Topical**

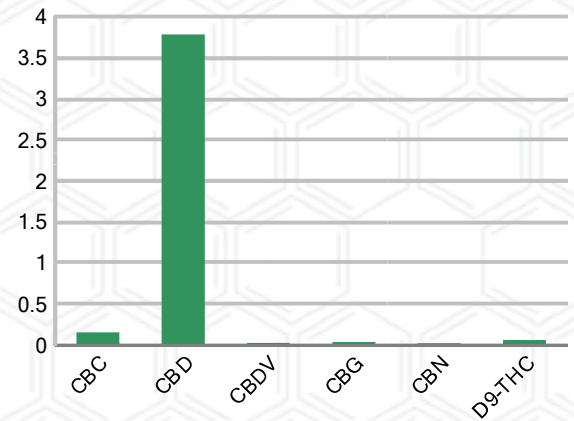
CANNABINOID PROFILE

Analyte	LOQ (%)	% Weight	mg/g
CBC	0.01	0.156	1.557
CBD	0.01	3.782	37.82
CBDa	0.01	ND	ND
CBDV	0.01	0.025	0.251
CBG	0.01	0.036	0.362
CBGa	0.01	ND	ND
CBN	0.01	0.022	0.219
d8-THC	0.01	ND	ND
d9-THC	0.01	0.060	0.602
THCa	0.01	ND	ND
THCV	0.01	ND	ND
Total Cannabinoids		4.081	40.81
Total Potential THC		0.060	0.602
Total Potential CBD		3.782	37.82
Total Potential CBG		0.036	0.362

SAMPLE IMAGE



CANNABINOID % Weight



Ratio of Total Potential CBD to Total Potential THC **63.03 : 1**

Ratio of Total Potential CBG to Total Potential THC **0.60 : 1**

*Total Cannabinoids refers to the sum of all cannabinoids detected.

*Total Potential CBD = (0.877 x CBDa) + CBD. *Total Potential THC = (0.877 x THCa) + THC. *Total Potential CBG = (0.877 x CBGa) + CBG.

*Total Potential THC/CBD are calculated to take into account the loss of an acid group during decarboxylation.



J.H. Hobgood
Laboratory Manager

SIGNATURE

Jamie Hobgood

LABORATORY MANAGER

02/18/2026 10:26 AM

DATE

This product has been tested by CannaBusiness Laboratories using validated testing methodologies and a quality system. Values reported relate only to the product tested. CannaBusiness Laboratories makes no claims as to the efficacy, safety, or other risks associated with any detected or non-detected levels of any compounds reported herein. This Certificate shall not be reproduced except in full, without the written permission of CannaBusiness Laboratories. Photo is of sample received by the lab and may vary from final packaging. The results apply to the sample as received.



Certificate of Analysis

CANNABUSINESS LABORATORIES, LLC

Customer

Great Lakes Hemp, Inc
W330 Litle Prairie Rd.
Palmyra, WI 53156
USDA_55_0067



Overall Batch Results	
Potency (mg/g)	

Sample Name: Hemp Breeze 1oz 1000mg
Sample ID: 260209023
Order Number: CB260209004
Product Type: Topical
Sample Type: Topical
Received Date: 02/09/2026
Batch Number: 192506ALGLHJB-002HB
Collection Date:

COA released: 02/18/2026 10:26 AM

Potency (mg/g)						
Date Tested: 02/13/2026	Method: CB-SOP-028	Instrument: HPLC-PDA#1(HempAnalyzer3)				

Analyte	Result	Units	LOQ	LOD	Limits	Pass / Fail
CBC (Cannabichromene)	0.156	%	0.010			
CBC (Cannabichromene) mg/g	1.557	mg/g	0.100			
CBD (Cannabidiol)	3.782	%	0.010			
CBD (Cannabidiol) mg/g	37.82	mg/g	0.100			
CBDa (Cannabidiolic Acid)	ND	%	0.010			
CBDa (Cannabidiolic Acid) mg/g	ND	mg/g	0.100			
CBDV (Cannabidivarin)	0.025	%	0.010			
CBDV (Cannabidivarin) mg/g	0.251	mg/g	0.100			
CBG (Cannabigerol)	0.036	%	0.010			
CBG (Cannabigerol) mg/g	0.362	mg/g	0.100			
CBGa (Cannabigerolic Acid)	ND	%	0.010			
CBGa (Cannabigerolic Acid) mg/g	ND	mg/g	0.100			
CBN (Cannabinol)	0.022	%	0.010			
CBN (Cannabinol) mg/g	0.219	mg/g	0.100			
D8-THC (D8-Tetrahydrocannabinol)	ND	%	0.010			
D8-THC (D8-Tetrahydrocannabinol) mg/g	ND	mg/g	0.100			
D9-THC (D9-Tetrahydrocannabinol)	0.060	%	0.010			
D9-THC (D9-Tetrahydrocannabinol) mg/g	0.602	mg/g	0.100			
THCa (Tetrahydrocannabinolic Acid)	ND	%	0.010			
THCa (Tetrahydrocannabinolic Acid) mg/g	ND	mg/g	0.100			
THCV (Tetrahydrocannabivarin)	ND	%	0.010			
THCV (Tetrahydrocannabivarin) mg/g	ND	mg/g	0.100			



J. Hobgood
Laboratory Manager
SIGNATURE

Jamie Hobgood

02/18/2026 10:26 AM

DATE

M of U = Measurement, NT = Not tested, ND = Not detected; LOQ = Limit of Quantitation; <LOQ = Detected; >ULOL = Above upper limit of linearity; CFU/g = Colony forming units per 1 gram; TNTC = Too numerous to count

This product has been tested by CannaBusiness Laboratories using validated testing methodologies and a quality system. Values reported relate only to the product tested. CannaBusiness Laboratories makes no claims as to the efficacy, safety, or other risks associated with any detected or non-detected levels of any compounds reported herein. This Certificate shall not be reproduced except in full, without the written permission of CannaBusiness Laboratories. Photo is of sample received by the lab and may vary from final packaging. The results apply to the sample as received.